



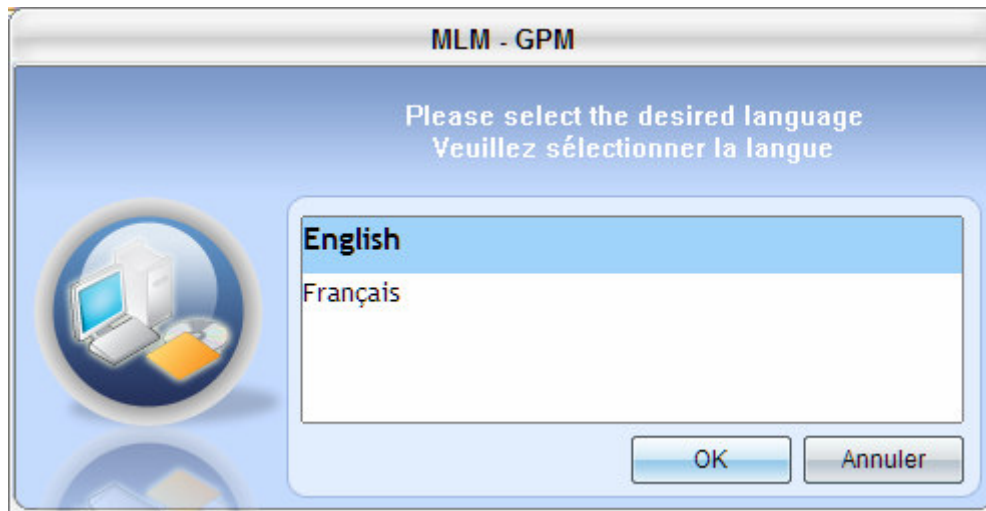
Margill Loan Manager

Installation

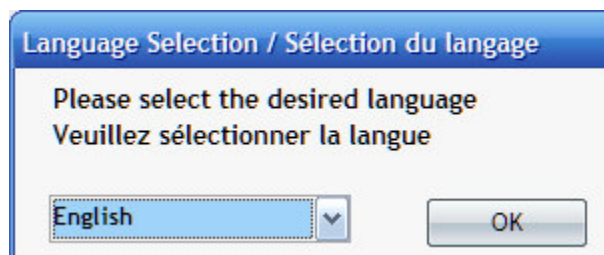
Download “Margill-Loan-Manager-Inst.EXE” and save to Desktop preferably.

For Windows Vista users, see the two last pages of this document.

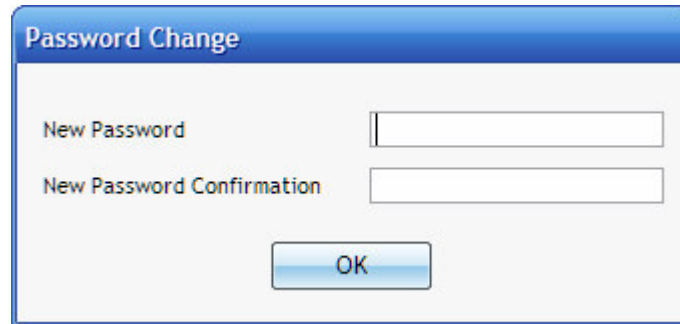
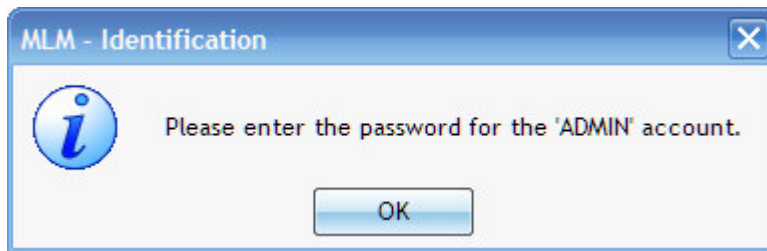
Double click to install and chose an install language.



Follow the directions. Once the hardware installation is completed, launch Margill Loan Manger (MLM) and the following window will appear for user preferences:



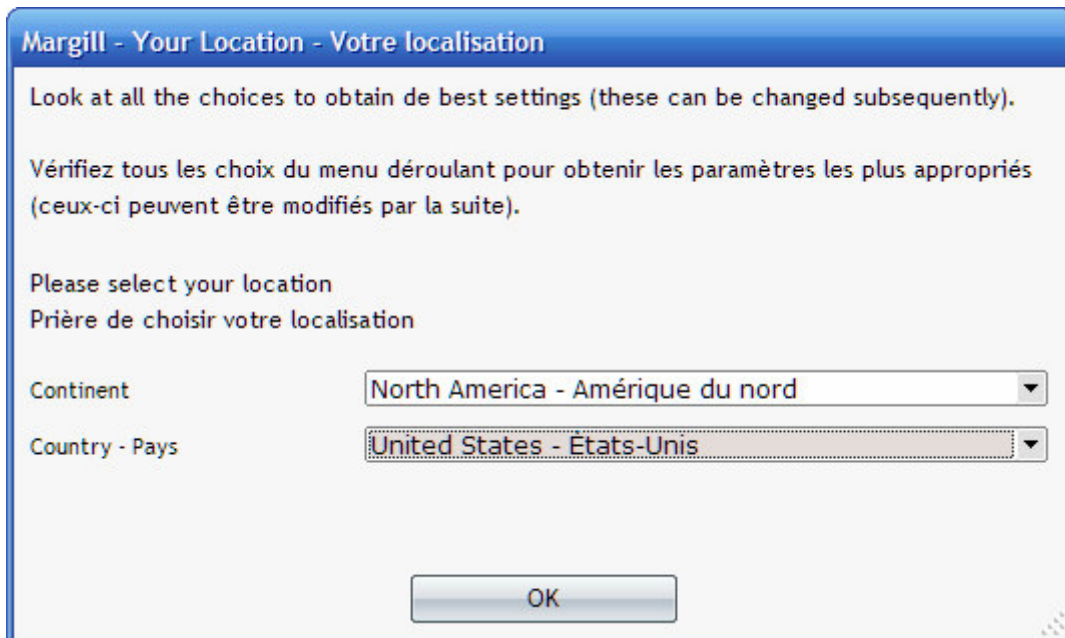
You will then be prompted to enter a password for the Administrator account. **DO NOT FORGET THIS PASSWORD.**



PLEASE MAKE SURE NOT TO FORGET THIS PASSWORD!

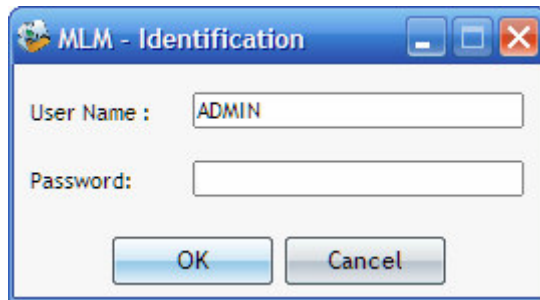
The password is case sensitive (small letters or capitals).

You will then be prompted to enter your location. MLM will create some settings for your location (interest rate tables and sales tax tables).

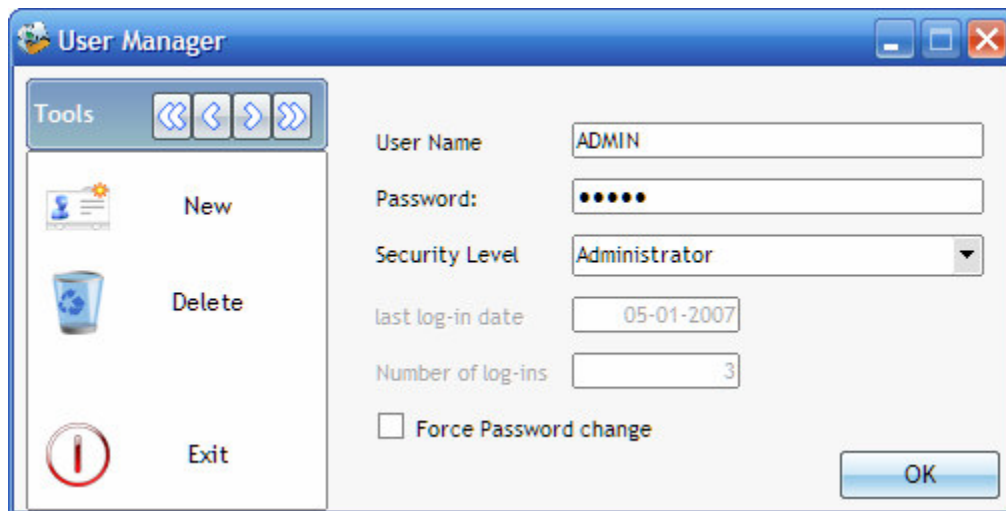


Setup is now complete.

When launching MLM you must always enter your "User Name" which is "ADMIN" and your password, selected previously.



This may be changed in the “User Manager” window (“Tools”, “Users”). Other users may also be created with various security levels (consult the User’s Guide - F1 - for more information).



Creating the first Record

To create the first record, go to “File”, “New Record”.

If files were created in the “Margill Standard Edition”, use “Import” from the “File” menu and select the directory where your Margill (.FLC) files were saved. You may import from many directories by doing the same procedure for each directory.

Help file

Consult the Help file (F1) or “Tools” “F1- Help”. The help file is very thorough.

Other

The Demo version is a complete version but valid for 30 days.

After the purchase of a license, an activation key will be required for permanent activation of the Margill Loan Manager.

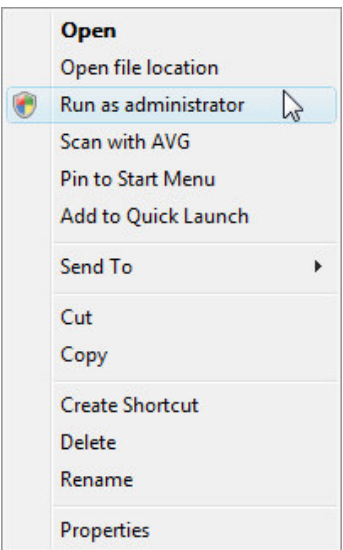
The price of a license is based on the number of users and the number of Records (loans or other) allowed. It is possible at any time to increase the number of Records in the Loan Manager by contacting Jurismedia.

www.margill.com/mlm

Vista users, see next page...

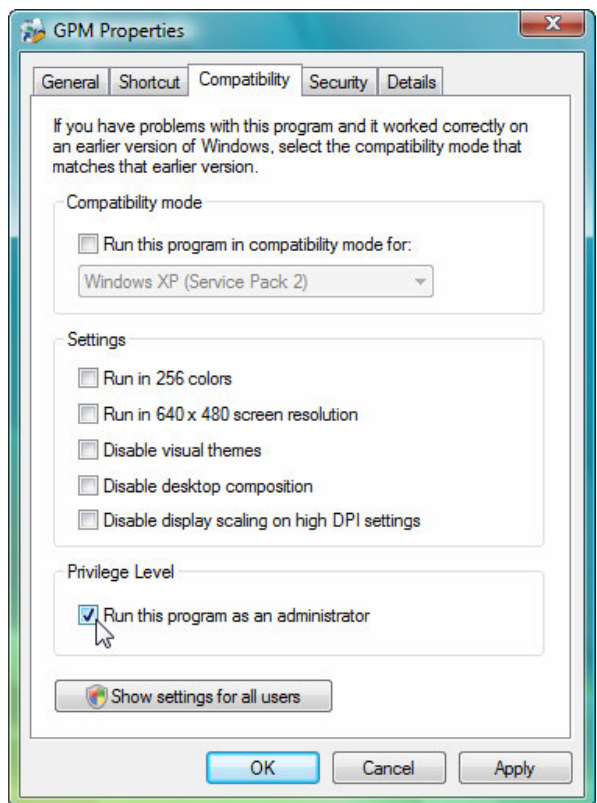
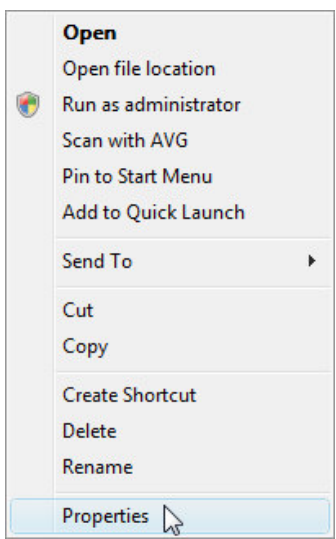
Using Margill Loan Manager in Windows Vista

Windows Vista operates slightly differently than XP and the previous Windows operating systems by offering more stringent, often annoying, security options.



To install Margill Loan Manager, you must run as **Administrator** mode in Vista. To execute in Administrator mode, press on the installation file with the right mouse click and choose "Run as Administrator" (See window to the left).

Once installed, to start the program in Administrator mode, follow the "Run as administrator" mode as described above or, to resolve this annoying issue permanently, right click on the program's icon and go to "Properties" (see windows below). Choose "Compatibility" and "Privilege Level". Check "Execute this program as an administrator".



Another security step often imposed by Vista is the "User Account Control". It is then required to "Authorize" to run the program.