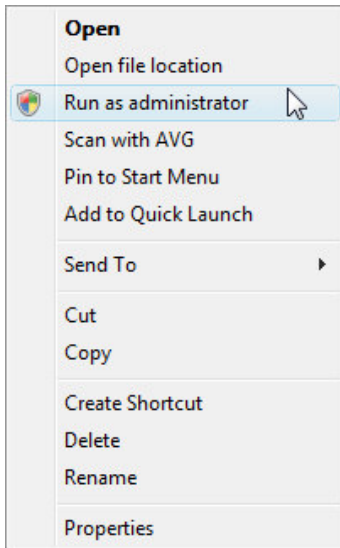




Using Margill and Margill Loan Manager in Windows Vista

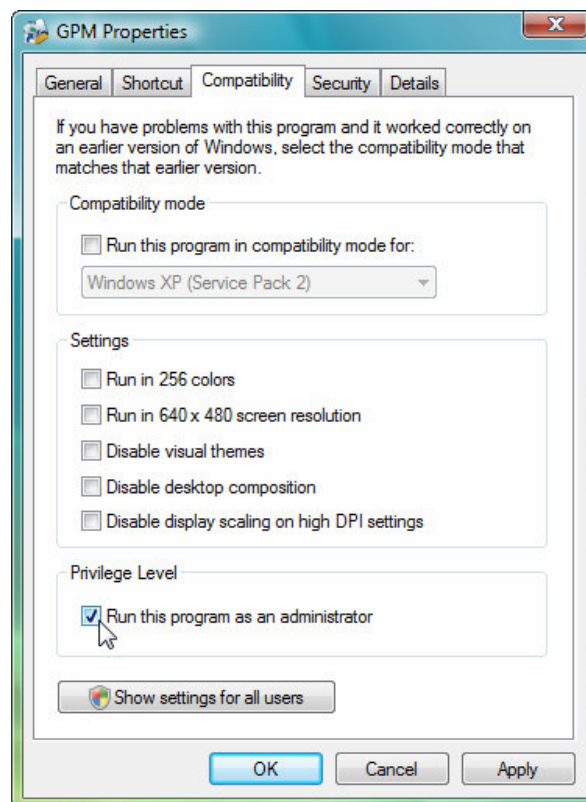
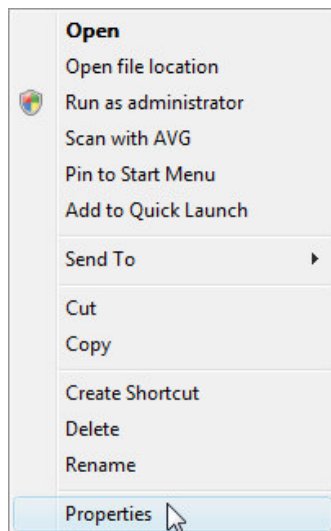


Windows Vista operates slightly differently than XP and the previous Windows operating systems by offering more binding safety options.



To install Margill Standard Edition or Margill Loan Manager, you must run as **Administrator** mode in Vista. To execute in Administrator mode, press on the installation file (Install.exe) with the right mouse click and choose "Run as Administrator" (See window to the left).

Once installed, to start the program in Administrator mode, follow the "Run as administrator" mode as described above. To fix this permanently right click on the program's icon and go to "Properties" (see windows below). Choose "Compatibility" and "Privilege Level". Mark "Execute this program as administrator".



Another security level often imposed by Vista is the "User Account Control". It is then necessary to "Authorize" the execution of the program.